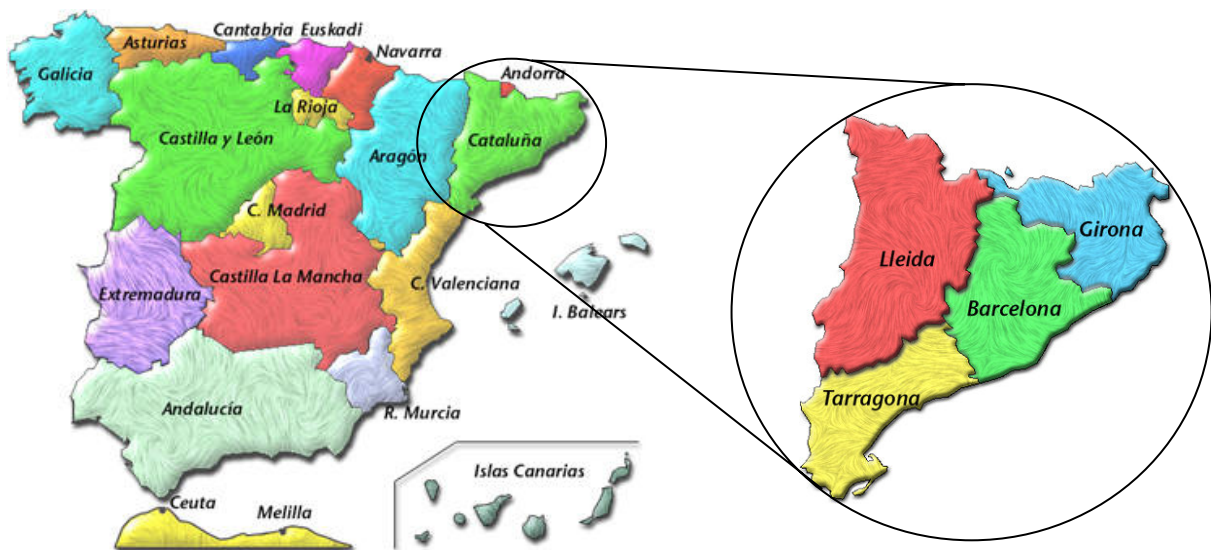


ACCOMODATION AND ACCESS GUIDE

BARCELONA CITY

The structure of Spain is constituted by 17 autonomous communities. One of these, Catalonia, is formed by 4 provinces where Barcelona is its capital and also the second leading city in both size and importance, after Madrid. Its port is one of the most important on the Mediterranean Sea.



More information of Barcelona city at:

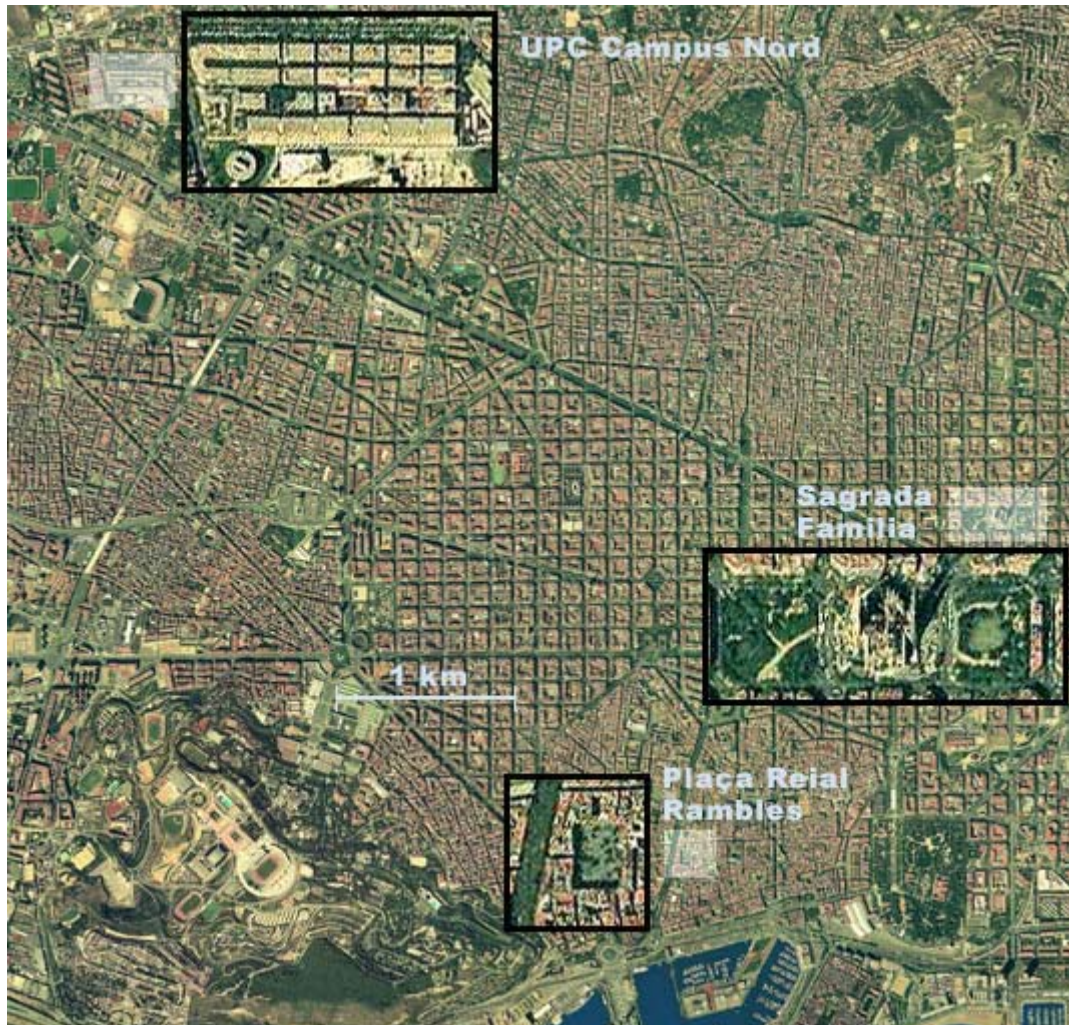
<http://www.barcelonaturisme.com/turisme/home.htm>

<http://www.bcn.es/english/ihome.htm>

HOW TO GET TO BARCELONA CITY

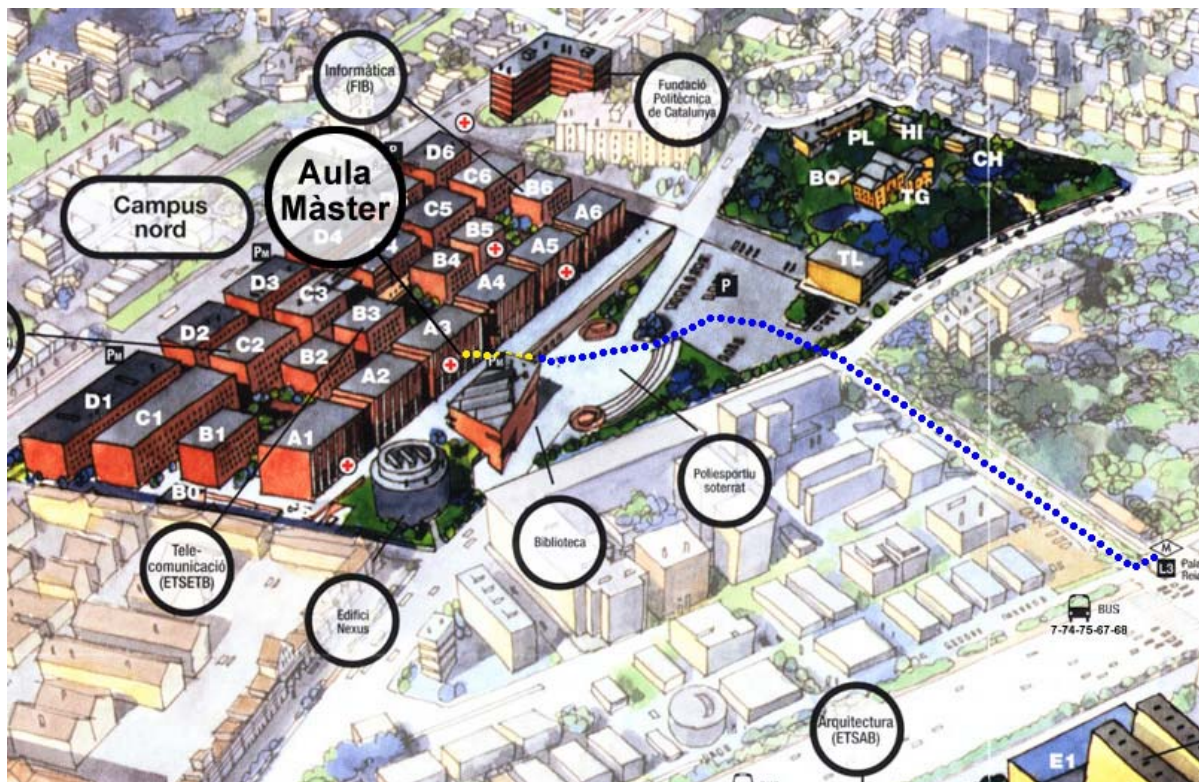
- by **air**: The easiest way to come to Barcelona is by plane. Barcelona has its own (www.aena.es) from there, you will be able to go the city by taking a train to the Sants station and then on to central Placa de Catalunya. There is also a shuttle bus service which departs every 15 minutes and takes 30 minutes to deliver passengers into the city. Going from the airport to the center of the city by taxi should cost 15 to 18 Euros, depending on traffic conditions.
- by **metro**: Compared to the European standard, Barcelona's metro is relatively small, yet it manages to serve the city quite well. It has 4 lines and they are easy to become acquainted with. Single fares cost €1.25 and a 10 ride ticket costs €6. More information at www.tmb.es.
- by **train**: The main railway stations are Estació de Sants (Metro Sants-Estació) and Estació de França (Metro Barceloneta). More information at www.renfe.es.

SATELLITE VIEW OF BARCELONA WITH SOME HIGHLIGHTS



HOW TO GET TO THE UPC CAMPUS NORD

- by **bus**: Lines 33, 54, 75 and 60 stop just behind the campus. Lines 7, 33, 67, 68 and 74 stop at the Diagonal (big avenue), from there, walk up the street you find on the left side of the Gardens of the Palau Reial (to the mountain side).
- by **metro**: Take the Line 3 until "Palau Reial" station. From there, walk up the street you find on the left side of the Gardens of the Palau Reial (to the mountain side).
- by **tramway**: Take the T1 until "Palau Reial" station. From there, walk up the street you find on the left side of the Gardens of the Palau Reial (to the mountain side).



How to get to UPC - Campus nord

HOTEL ACCOMMODATION

We recommend the following Husa Hotels Chain in different categories:

- **Hotel Husa L'illa ******

Located closed to the UPC Campus, 15 minutes walking, in the most important bussiness area

- **Hotel Husa Arenas ******

Located near Diagonal Avenue, close to the city's most important business and shopping centre and 30 minutes walking to UPC Campus

- **Hotel Husa Pedralbes *****

Located in the Conference Venue district, close to shopping areas of Diagonal - Pedralbes and University area (UB, UAB, Iese, Esade)

- **Hotel Husa Tres Torres *****

A few minutes from the City Centre, ways of entrance to the main ring roads, known as Rondas, and motorways. Close to shopping areas of Diagonal - Pedralbes, leisure and entertainment center (cinemas, pools, gymnasium, etc.), university area (UB, UAB, Iese, Esade)

- **Hotel Bonanova ****

Located near Diagonal Avenue, close to the city's most important business and shopping area, 25 minutes walking to UPC Campus

If you are interested in contacting Husa Hotels Chain, please contact www.husa.es

We also recommend the following three residences that offer lower rates:

- **Torre Girona residence**

This Hostel and Hall Residence is located at the UPC Campus, in the district of Pedralbes, one of the most exclusive neighbourhoods in Barcelona. It is well connected to the rest of the city, Line 3 Station Palau Reial, and also by Bus; The closest bus lines travelling to and from this area are the following: 7, 33, 63, 67, 68, 74, 75 and 78.

- **Lesseps residence**

This Hostel and Hall of Residence is situated between the neighbourhood of Gracia and the exclusive area of Barcelona. There are good connections with the UPC Campus. The nearest subway station is Lesseps (Line 3) and the closest Busstops are the following: 22, 24, 27, 28, 31, 32, 74 and 87.

More information of Torre Girona and Lesspes residences at www.resa.es/

- **Onix residence**

This residence is placed in the emblematic Barcelona neighbourhood of l'Eixample, opposite to the bus station of Barcelona Nord and next to the station of Renfe and subway of Arco de Triunfo. Very centric and with easy access to any part of the city due to its excellent location.

More information of Torre Girona and Lesspes residences at www.residenciaonix.com